




Certificate of Analysis

Compliance Test

Client Information: THRIVE FLOWER 60 N 23RD ST. APT. 1301 PHILADELPHIA, PA 19103	Manufacturing Facility: THRIVE FLOWER 60 N 23RD ST. APT. 1301 PHILADELPHIA, PA 19103	Batch Data: Batch # 2 Batch Date: 2025-10-27 Extracted From: Hemp D9 THC	Order Details: Test Reg State: National	Food Permits:
---	---	--	---	----------------------

Order # THR251027-010001 Order Date: 2025-10-27 Sample # AAHE350	Sampling Date: 2025-10-30 Lab Batch Date: 2025-10-30 Completion Date: 2025-11-14	Volume: 446.1 ml	Net Weight per Serving: 446.1 ml Servings Per Package: 1
--	---	-------------------------	---



Product Image

Staphylococcus Aureus Passed	Potency Passed	HHCP Tested	Terpenes Passed	Pesticides Passed
Heavy Metals Passed	Microbiology Petrifilm Passed	Mycotoxins Passed	Residual Solvents Passed	Moisture Tested
Water Activity Tested	Pathogenic Microbiology Passed	Listeria Monocytogenes Passed	Microbiology Petrifilm Passed	Filtration Passed

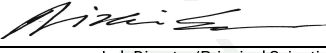
Potency Summary

Total HHC per Serving per Package	<LOQ 0.00 mg 0.00 mg	Delta 9 THC per Serving per Package	0.00724% 32.3 mg 32.3 mg
Total Active CBD per Serving per Package	0.000790% 3.52 mg 3.52 mg	Total CBG per Serving per Package	<LOQ 0.00 mg 0.00 mg
Total CBN per Serving per Package	0.000290% 1.29 mg 1.29 mg	Total Cannabinoids per Serving per Package	0.00832% 37.1 mg 37.1 mg
Total Active THC (LA) per Serving per Package	0.00724% 32.3 mg 32.3 mg	Total Active THC per Serving per Package	0.00724% 32.3 mg 32.3 mg
Total DELTA-9-THC per Serving per Package	0.00724% 32.3 mg 32.3 mg		

Terpenes Summary

Analyte	Result (mg/g)	(%)
Total Terpenes: 0.000%		

Detailed Terpenes Analysis is on the following page


Aixia Sun Lab Director/Principal Scientist
D.H.Sc., M.Sc., B.Sc., MT (AAB)



Definitions and Abbreviations used in this report: Definitions and Abbreviations used in this report: Total CBD = CBD + (CBD-A * 0.877), Total CBDV = CBDV + (CBDVA * 0.867), Total THC = (THCA-A * 0.877) + Delta 9 THC, Total THCV = THCV + (THCVA * 0.87), CBG Total = (CBGA * 0.878) + CBG, CBN Total = (CBNA * 0.876) + CBN, Total CBC = CBC + (CBCA * 0.877), Total Cannabinoids = Total percentage of cannabinoids within the sample. (mg/ml) = Milligrams per Milliliter, LOQ = Limit of Quantitation, LOD = Limit of Detection, Dilution = Dilution Factor(ppb) = Parts per Billion, (%) = Percent, (cfu/g) = Colony Forming Unit per Gram(cfu/g) = Colony Forming Unit per Gram, LOD = Limit of Detection, (µg/g) = Microgram per Gram(ppm) = Parts per Million, (ppm) = (µg/g), (aw) = Water Activity, (mg/Kg) = Milligram per Kilogram Pesticides indicators: 1=FL LOD/LOQ/AL; 2= CO LOD/LOQ/AL; 3 = CO LOD/ACS CO LOQ

This report shall not be reproduced, without written approval, from ACS Laboratory. The results of this report relate only to the material or product analyzed. Test results are confidential unless explicitly waived otherwise. ACS Laboratory is accredited to the ISO/IEC 17025:2017 Standard. The tests and/or calibrations marked with an "" are not ISO/IEC 17025:2017 accredited test results. This facility meets the human health and food safety sanitation requirements of the Kentucky Cabinet for Health and Family Services as documented by KYCHFS.*



Certificate of Analysis

Compliance Test

Client Information:
THRIVE FLOWER
60 N 23RD ST.
APT. 1301
PHILADELPHIA, PA
19103

Manufacturing Facility:
THRIVE FLOWER
60 N 23RD ST.
APT. 1301
PHILADELPHIA, PA 19103

Batch Data:
Batch # 2
Batch Date: 2025-10-27
Extracted From: Hemp D9 THC

Order Details:
Test Reg State: National

Food Permits:

Order #
THR251027-010001
Order Date: 2025-10-27
Sample # AAHE350

Sampling Date: 2025-10-30
Lab Batch Date: 2025-10-30
Completion Date: 2025-11-14

Volume: 446.1 ml

Net Weight per Serving:
446.1 ml
Servings Per Package:
1

National Panel Potency Passed SOP13.030 (LCMS)
Specimen Weight: 20000.000 mg

Analyte	Dilution (1:n)	LOD (mg/g)	LOQ (%)	Result (µg/ml)	(%)	Per Serving (mg)	Per Package (mg)
Delta-9 THC	40.000	.0000571	0.002	72.4	0.00724	32.3	32.3
CBD	8.000	.0000421	0.002	7.90	0.000790	3.52	3.52
CBN	8.000	.0000597	0.002	2.90	0.000290	1.29	1.29
CBC	8.000	.0000514	0.002	<LOQ	<LOQ	0.00	0.00
CBCA	8.000	0.000107	0.002	<LOQ	<LOQ	0.00	0.00
CBCV	8.000	.0000307	0.002	<LOQ	<LOQ	0.00	0.00
CBDA	8.000	.0000143	0.002	<LOQ	<LOQ	0.00	0.00
CBDV	8.000	.0000614	0.002	<LOQ	<LOQ	0.00	0.00
CBDVA	8.000	0.000014	0.002	<LOQ	<LOQ	0.00	0.00
CBE	8.000	.0000483	0.002	<LOQ	<LOQ	0.00	0.00
CBG	8.000	.0000507	0.002	<LOQ	<LOQ	0.00	0.00
CBGA	8.000	.0000847	0.002	<LOQ	<LOQ	0.00	0.00
CBGM	8.000	.000116	0.002	<LOQ	<LOQ	0.00	0.00
CBGV	8.000	.0000287	0.002	<LOQ	<LOQ	0.00	0.00
CBL	8.000	.0000919	0.002	<LOQ	<LOQ	0.00	0.00
CBNA	8.000	0.000014	0.002	<LOQ	<LOQ	0.00	0.00
CBT	8.000	0.000325	0.004	<LOQ	<LOQ	0.00	0.00
CBV	8.000	.0000670	0.002	<LOQ	<LOQ	0.00	0.00
Delta-8 THC	8.000	.0000808	0.002	<LOQ	<LOQ	0.00	0.00
Delta-8 THC-O Acetate	8.000	0.000027	0.002	<LOQ	<LOQ	0.00	0.00
Exo-THC	8.000	0.000054	0.002	<LOQ	<LOQ	0.00	0.00
THCA-A	8.000	0.000938	0.004	<LOQ	<LOQ	0.00	0.00
THCV	8.000	.0000276	0.002	<LOQ	<LOQ	0.00	0.00
Total Active THC	8.000			72.0	0.00724	32.1	32.1
Total Active CBD	8.000			8.00	0.000790	3.57	3.57

Aixia Sun Lab Director/Principal Scientist
D.H.Sc., M.Sc., B.Sc., MT (AAB)



Definitions are found on page 1

This report shall not be reproduced, without written approval, from ACS Laboratory. The results of this report relate only to the material or product analyzed. Test results are confidential unless explicitly waived otherwise. ACS Laboratory is accredited to the ISO/IEC 17025:2017 Standard. The tests and/or calibrations marked with an "*" are not ISO/IEC 17025:2017 accredited test results. This facility meets the human health and food safety sanitation requirements of the Kentucky Cabinet for Health and Family Services as documented by KYCHFS.





Certificate of Analysis Compliance Test

Client Information:

THRIVE FLOWER
60 N 23RD ST.
APT. 1301
PHILADELPHIA, PA
19103

Manufacturing Facility:

THRIVE FLOWER
60 N 23RD ST.
APT. 1301
PHILADELPHIA, PA 19103

Batch Data:

Batch # 2
Batch Date: 2025-10-27
Extracted From: Hemp D9 THC

Order Details:

Test Reg State: National

Food Permits:

Order #

THR251027-010001
Order Date: 2025-10-27
Sample # AAHE350

Sampling Date: 2025-10-30

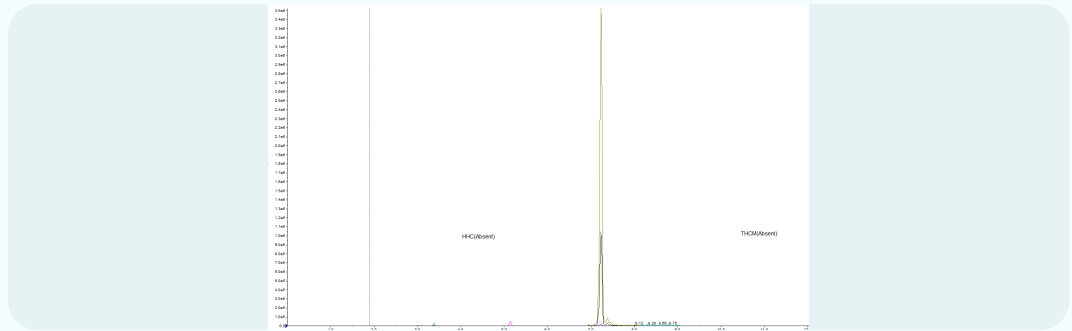
Lab Batch Date: 2025-10-30
Completion Date: 2025-11-14

Volume: 446.1 ml

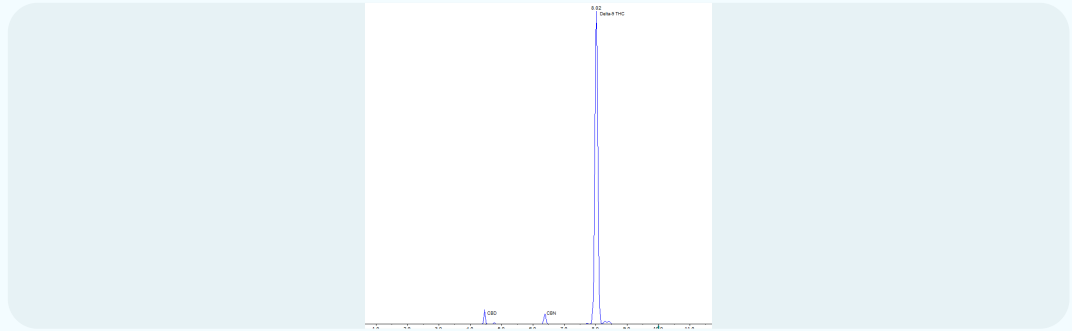
Net Weight per Serving:

446.1 ml
Servings Per Package:
1

HHCP



National Panel Potency



Aixia Sun
Aixia Sun Lab Director/Principal Scientist
D.H.Sc., M.Sc., B.Sc., MT (AAB)



Definitions are found on page 1

This report shall not be reproduced, without written approval, from ACS Laboratory. The results of this report relate only to the material or product analyzed. Test results are confidential unless explicitly waived otherwise. ACS Laboratory is accredited to the ISO/IEC 17025:2017 Standard. The tests and/or calibrations marked with an "*" are not ISO/IEC 17025:2017 accredited test results. This facility meets the human health and food safety sanitation requirements of the Kentucky Cabinet for Health and Family Services as documented by KYCHFS.





Certificate of Analysis Compliance Test

Client Information:
THRIVE FLOWER
60 N 23RD ST.
APT. 1301
PHILADELPHIA, PA
19103

Manufacturing Facility:
THRIVE FLOWER
60 N 23RD ST.
APT. 1301
PHILADELPHIA, PA 19103

Batch Data:
Batch # 2
Batch Date: 2025-10-27
Extracted From: Hemp D9 THC

Order Details:
Test Reg State: National

Food Permits:

Order #
THR251027-010001
Order Date: 2025-10-27
Sample # AAHE350

Sampling Date: 2025-10-30
Lab Batch Date: 2025-10-30
Completion Date: 2025-11-14

Volume: 446.1 ml

Net Weight per Serving:
446.1 ml
Servings Per Package:
1

NP Terpenes

Specimen Weight: 451.000 mg

Passed
SOP13.045 (GC-MS/GC (Liquid Injection))

Dilution Factor: 1.000

Analyte	LOQ (%)	Result (mg/g)	(%)	Analyte	LOQ (%)	Result (mg/g)	(%)
(+)-Cedrol	0.002	<LOQ	<LOQ	Fenchyl Alcohol	0.002	<LOQ	<LOQ
(R)-(+)-Limonene	0.002	<LOQ	<LOQ	Gamma-Terpinene	0.002	<LOQ	<LOQ
3-Carene	0.002	<LOQ	<LOQ	Geraniol	0.002	<LOQ	<LOQ
alpha-Bisabolol	0.002	<LOQ	<LOQ	Geranyl acetate	0.002	<LOQ	<LOQ
alpha-Cedrene	0.002	<LOQ	<LOQ	Guaiol	0.002	<LOQ	<LOQ
alpha-Humulene	0.002	<LOQ	<LOQ	Hexahydrothymol	0.002	<LOQ	<LOQ
alpha-Phellandrene	0.002	<LOQ	<LOQ	Isoborneol	0.002	<LOQ	<LOQ
alpha-Pinene	0.002	<LOQ	<LOQ	Isopulegol	0.002	<LOQ	<LOQ
alpha-Terpinene	0.002	<LOQ	<LOQ	Linalool	0.002	<LOQ	<LOQ
beta-Myrcene	0.002	<LOQ	<LOQ	Nerol	0.002	<LOQ	<LOQ
beta-Pinene	0.002	<LOQ	<LOQ	Ocimene	0.00033	<LOQ	<LOQ
Borneol	0.002	<LOQ	<LOQ	Pulegone	0.002	<LOQ	<LOQ
Camphene	0.002	<LOQ	<LOQ	Sabinene	0.002	<LOQ	<LOQ
Camphors	0.006	<LOQ	<LOQ	Sabinene Hydrate	0.002	<LOQ	<LOQ
Caryophyllene oxide	0.002	<LOQ	<LOQ	Terpinolene	0.002	<LOQ	<LOQ
cis-Nerolidol	0.002	<LOQ	<LOQ	Total Terpeneol	0.00126	<LOQ	<LOQ
Eucalyptol	0.002	<LOQ	<LOQ	trans-Caryophyllene	0.002	<LOQ	<LOQ
Farnesene	0.002	<LOQ	<LOQ	trans-Nerolidol	0.002	<LOQ	<LOQ
Fenchone	0.002	<LOQ	<LOQ	Valencene	0.002	<LOQ	<LOQ

Staphylococcus Aureus

Specimen Weight: 240.700 mg

Passed
SOP13.029 (qPCR)

Dilution Factor: 1.000

Analyte	Result
Staphylococcus aureus	Absence

National Panel Moisture

Specimen Weight: 600.000 mg

Tested
SOP13.015 (Moisture Meter)

Dilution Factor: 1.000

Analyte	Action Level (%)	Result (%)
Moisture	15	N/A

Aixia Sun
Aixia Sun Lab Director/Principal Scientist
D.H.Sc., M.Sc., B.Sc., MT (AAB)



Definitions are found on page 1

This report shall not be reproduced, without written approval, from ACS Laboratory. The results of this report relate only to the material or product analyzed. Test results are confidential unless explicitly waived otherwise. ACS Laboratory is accredited to the ISO/IEC 17025:2017 Standard. The tests and/or calibrations marked with an "*" are not ISO/IEC 17025:2017 accredited test results. This facility meets the human health and food safety sanitation requirements of the Kentucky Cabinet for Health and Family Services as documented by KYCHFS.





Certificate of Analysis Compliance Test

Client Information: THRIVE FLOWER 60 N 23RD ST. APT. 1301 PHILADELPHIA, PA 19103	Manufacturing Facility: THRIVE FLOWER 60 N 23RD ST. APT. 1301 PHILADELPHIA, PA 19103	Batch Data: Batch # 2 Batch Date: 2025-10-27 Extracted From: Hemp D9 THC	Order Details: Test Reg State: National	Food Permits:
---	---	--	---	----------------------

Order # THR251027-010001 Order Date: 2025-10-27 Sample # AAHE350	Sampling Date: 2025-10-30 Lab Batch Date: 2025-10-30 Completion Date: 2025-11-14	Volume: 446.1 ml	Net Weight per Serving: 446.1 ml Servings Per Package: 1
---	--	------------------	---

National Panel Water Activity Specimen Weight: 0.500 g Dilution Factor: 1.000	Tested SOP13.016 (Water Activity Analyzer)
Analyte	Action Level (aw) Result (aw)
Water Activity	N/A 0.994

National Panel Listeria Monocytogenes Specimen Weight: 1028.700 mg Dilution Factor: 1.000	Passed SOP13.032 (qPCR)
Analyte	Result
Listeria Monocytogenes	Absence

National Panel Bile Tolerant Gram-Negative Bacteria Specimen Weight: 995.400 mg Dilution Factor: 1.000	Passed SOP13.003 (Petrifilm)
Analyte	LOQ (cfu/g) Action Level (cfu/g) Result (cfu/g)
Bile tolerant gram-negative bacteria	100 100000 <10

National Panel Pathogenic Microbiology SAE (MicroArray) Specimen Weight: 1041.500 mg Dilution Factor: 1.000	Passed SOP13.019 (Micro Array)
Analyte	Action Level (cfu/g) Result (cfu/g) Analyte Action Level (cfu/g) Result (cfu/g)
Aspergillus (Flavus, Fumigatus, Niger, Terreus)	1 Absence in 1g STEC E. Coli 1 Absence in 1g
Salmonella	1 Absence in 1g

Aixia Sun Lab Director/Principal Scientist
D.H.Sc., M.Sc., B.Sc., MT (AAB)



Definitions are found on page 1

This report shall not be reproduced, without written approval, from ACS Laboratory. The results of this report relate only to the material or product analyzed. Test results are confidential unless explicitly waived otherwise. ACS Laboratory is accredited to the ISO/IEC 17025:2017 Standard. The tests and/or calibrations marked with an "" are not ISO/IEC 17025:2017 accredited test results. This facility meets the human health and food safety sanitation requirements of the Kentucky Cabinet for Health and Family Services as documented by KYCHFS.*





Certificate of Analysis Compliance Test

Client Information: THRIVE FLOWER 60 N 23RD ST. APT. 1301 PHILADELPHIA, PA 19103	Manufacturing Facility: THRIVE FLOWER 60 N 23RD ST. APT. 1301 PHILADELPHIA, PA 19103	Batch Data: Batch # 2 Batch Date: 2025-10-27 Extracted From: Hemp D9 THC	Order Details: Test Reg State: National	Food Permits:
---	---	--	---	----------------------

Order # THR251027-010001 Order Date: 2025-10-27 Sample # AAHE350	Sampling Date: 2025-10-30 Lab Batch Date: 2025-10-30 Completion Date: 2025-11-14	Volume: 446.1 ml	Net Weight per Serving: 446.1 ml Servings Per Package: 1
--	---	-------------------------	---

Filth and Foreign Material		Passed
Specimen Weight: N/A Dilution Factor: 1.000		SOP13.020 (Electronic Balance)
Analyte	Action Level (%)	Result (%)
Covered Area	10	0.00
Feces	0.5	0.00
		SOP13.020 (Electronic Balance)
		Action Level (%)
		Result (%)
		1
		0.00

National Panel Microbiology (Petrifilm)		Passed					
Specimen Weight: 1005.500 mg		SOP13.003 (Petrifilm)					
Dilution Factor: 1.000							
Analyte	LOQ (cfu/g)	Action Level (cfu/g)	Result (cfu/g)	Analyte	LOQ (cfu/g)	Action Level (cfu/g)	Result (cfu/g)
Total Aerobic Count	1000	100000	<1000	Total Enterobacteriaceae	100	1000	<10
Total Coliform	100	1000	<10	Total Yeast/Mold	100	10000	<100

Aixia Sun Lab Director/Principal Scientist
D.H.Sc., M.Sc., B.Sc., MT (AAB)

Definitions are found on page 1

This report shall not be reproduced, without written approval, from ACS Laboratory. The results of this report relate only to the material or product analyzed. Test results are confidential unless explicitly waived otherwise. ACS Laboratory is accredited to the ISO/IEC 17025:2017 Standard. The tests and/or calibrations marked with an "*" are not ISO/IEC 17025:2017 accredited test results. This facility meets the human health and food safety sanitation requirements of the Kentucky Cabinet for Health and Family Services as documented by KYCHFS.





Certificate of Analysis

Compliance Test

Client Information: THRIVE FLOWER 60 N 23RD ST. APT. 1301 PHILADELPHIA, PA 19103	Manufacturing Facility: THRIVE FLOWER 60 N 23RD ST. APT. 1301 PHILADELPHIA, PA 19103	Batch Data: Batch # 2 Batch Date: 2025-10-27 Extracted From: Hemp D9 THC	Order Details: Test Reg State: National	Food Permits:
---	---	--	---	----------------------

Order # THR251027-010001 Order Date: 2025-10-27 Sample # AAHE350	Sampling Date: 2025-10-30 Lab Batch Date: 2025-10-30 Completion Date: 2025-11-14	Volume: 446.1 ml	Net Weight per Serving: 446.1 ml Servings Per Package: 1
--	---	-------------------------	---

National Panel Mycotoxins						Passed			
Specimen Weight: 591.300 mg						SOP13.059 (LCMS)			
Dilution Factor: 2.540									
Analyte	LOD (ppb)	LOQ (ppb)	Action Level (ppb)	Result	Analyte	LOD (ppb)	LOQ (ppb)	Action Level (ppb)	Result (ppb)
Aflatoxin B1	0.093	2.5	5	<LOQ	Aflatoxin G2	0.627	2.5	5	<LOQ
Aflatoxin B2	0.121	2.5	5	<LOQ	Aflatoxin Total		2.5	20	<LOQ
Aflatoxin G1	0.191	2.5	5	<LOQ	Ochratoxin A	0.638	3.5	20	<LOQ

HHCP						Tested			
Specimen Weight: 405000.000 mg						SOP13.050 (LCMS)			
Dilution Factor: 40.000									
Analyte	LOD (%)	LOQ (%)	Result (µg/ml)	(%)	Analyte	LOD (%)	LOQ (%)	Result (µg/ml)	(%)
(9R)-HHC	0.000	0.075	<LOQ	<LOQ	9(S)-HHCP	0.000	0.075	<LOQ	<LOQ
(9S)-HHC	0.000	0.075	<LOQ	<LOQ	CBC	0.000	0.075	<LOQ	<LOQ
(±)-9β-hydroxy-HHC	0.000	0.075	<LOQ	<LOQ	Delta-8 THC methyl ether	0.000	0.075	<LOQ	<LOQ
1(R)-H4-CBD	0.000	0.15	<LOQ	<LOQ	Delta-9 THC methyl ether	0.000	0.075	<LOQ	<LOQ
1(S)-H4-CBD	0.000	0.15	<LOQ	<LOQ	H2-CBD	0.000	0.075	<LOQ	<LOQ
9(R)-HHCP	0.000	0.075	<LOQ	<LOQ	Total HHC		0.075	<LOQ	<LOQ

National Panel Heavy Metals						Passed			
Specimen Weight: 251.500 mg						SOP13.048 (ICP-MS)			
Dilution Factor: 198.807									
Analyte	LOD (ppb)	LOQ (ppb)	Action Level (ppb)	Result (ppb)	Analyte	LOD (ppb)	LOQ (ppb)	Action Level (ppb)	Result (ppb)
Antimony (Sb)	0.032	1000	2000	<LOQ	Molybdenum (Mo)	0.009	500	1000	<LOQ
Arsenic (As)	0.014	100	200	<LOQ	Nickel (Ni)	0.352	250	500	<LOQ
Barium (Ba)	0.056	15000	30000	<LOQ	Osmium (Os)	0.003	50	100	<LOQ
Cadmium (Cd)	0.002	100	200	<LOQ	Palladium (Pd)	0.017	50	100	<LOQ
Chromium (Cr)	0.052	150	300	<LOQ	Platinum (Pt)	0.008	50	100	<LOQ
Cobalt (Co)	0.003	150	300	<LOQ	Rhodium (Rh)	0.003	50	100	<LOQ
Copper (Cu)	0.059	1500	3000	<LOQ	Ruthenium (Ru)	0.002	50	100	<LOQ
Gold (Au)	0.021	50	100	<LOQ	Selenium (Se)	4.631	6500	13000	<LOQ
Iridium (Id)	0.001	50	100	<LOQ	Silver (Ag)	0.005	350	700	<LOQ
Lead (Pb)	0.006	250	500	<LOQ	Thallium (Tl)	0.006	400	800	<LOQ
Lithium (Li)	0.301	1250	2500	<LOQ	Tin (Sn)	0.047	3000	6000	<LOQ
Mercury (Hg)	0.014	50	200	<LOQ	Vanadium (V)	0.038	50	100	<LOQ

Aixia Sun
Aixia Sun Lab Director/Principal Scientist
D.H.Sc., M.Sc., B.Sc., MT (AAB)



Definitions are found on page 1

This report shall not be reproduced, without written approval, from ACS Laboratory. The results of this report relate only to the material or product analyzed. Test results are confidential unless explicitly waived otherwise. ACS Laboratory is accredited to the ISO/IEC 17025:2017 Standard. The tests and/or calibrations marked with an "*" are not ISO/IEC 17025:2017 accredited test results. This facility meets the human health and food safety sanitation requirements of the Kentucky Cabinet for Health and Family Services as documented by KYCHFS.





Certificate of Analysis

Compliance Test

Client Information: THRIVE FLOWER 60 N 23RD ST. APT. 1301 PHILADELPHIA, PA 19103	Manufacturing Facility: THRIVE FLOWER 60 N 23RD ST. APT. 1301 PHILADELPHIA, PA 19103	Batch Data: Batch # 2 Batch Date: 2025-10-27 Extracted From: Hemp D9 THC	Order Details: Test Reg State: National	Food Permits:
---	---	--	---	----------------------

Order # THR251027-010001 Order Date: 2025-10-27 Sample # AAHE350	Sampling Date: 2025-10-30 Lab Batch Date: 2025-10-30 Completion Date: 2025-11-14	Volume: 446.1 ml	Net Weight per Serving: 446.1 ml Servings Per Package: 1
--	---	-------------------------	---

National Panel Residual Solvents				Passed			
Specimen Weight: 50.070 mg				SOP13.056,SOP13.039 (GCMS- (HS),GCMS-HS)			
Dilution Factor: 1.000							
Analyte	LOQ (ppm)	Action Level (ppm)	Result	Analyte	LOQ (ppm)	Action Level (ppm)	Result
1,1-Dichloroethene	0.03	2	<LOQ	Ethylbenzene	0.025	2170	<LOQ
1,2 Dimethoxyethane	0.025	5	<LOQ	Ethylene glycol	0.025	50	<LOQ
1,2-Dichloroethane	0.025	2	<LOQ	Ethylene Oxide	0.025	1	<LOQ
1,4 Dioxane	0.025	50	<LOQ	Formic acid	4	1000	<LOQ
1-Butanol	0.025	5000	<LOQ	Heptane	0.025	500	<LOQ
1-Pentanol	0.025	5000	<LOQ	Hexane	0.025	10	<LOQ
1-Propanol	0.025	5000	<LOQ	Isobutyl acetate	4	1000	<LOQ
2-Butanone	0.025	5000	<LOQ	Isopropyl acetate	0.025	5000	<LOQ
2-Ethoxyethanol	0.025	50	<LOQ	Isopropyl alcohol	0.025	500	<LOQ
2-Methyl-1-propanol	4	1000	<LOQ	Methanol	0.025	250	<LOQ
2-methylbutane	0.025	5000	<LOQ	Methyl acetate	4	1000	<LOQ
3-methyl-1-butanol	4	1000	<LOQ	Methylene chloride	0.025	1	<LOQ
Acetic acid	4	1000	<LOQ	N,N-dimethylacetamide	0.025	50	<LOQ
Acetone	0.025	500	<LOQ	N,N-dimethylformamide	0.025	50	<LOQ
Acetonitrile	0.025	50	<LOQ	Pentane	0.025	500	<LOQ
Anisole	4	1000	<LOQ	Propane	0.025	500	<LOQ
Benzene	0.025	1	<LOQ	Propyl acetate	4	1000	<LOQ
Butanes	0.025	800	<LOQ	Pyridine	0.025	50	<LOQ
Butyl acetate	4	1000	<LOQ	tert-Butyl methyl ether	4	1000	<LOQ
Chlorobenzene	0.28	50	<LOQ	Tetrahydrofuran	0.025	50	<LOQ
Chloroform	0.025	1	<LOQ	Tetramethylene sulfone	0.025	160	<LOQ
Cumene	0.025	50	<LOQ	Toluene	0.025	1	<LOQ
Dimethyl sulfoxide	0.025	5000	<LOQ	Total Xylenes	0.025	3	<LOQ
Ethanol	0.025	2500	<LOQ	Trichloroethylene	0.025	1	<LOQ
Ethyl Acetate	0.025	400	<LOQ	Triethylamine	4	1000	<LOQ
Ethyl Ether	0.025	500	<LOQ	Xylenes(o)	0.025	1	<LOQ
Ethyl formate	4	1000	<LOQ	Xylenes(p/m)	0.025	1	<LOQ

Aixa Sun Lab Director/Principal Scientist
D.H.Sc., M.Sc., B.Sc., MT (AAB)



Definitions are found on page 1

This report shall not be reproduced, without written approval, from ACS Laboratory. The results of this report relate only to the material or product analyzed. Test results are confidential unless explicitly waived otherwise. ACS Laboratory is accredited to the ISO/IEC 17025:2017 Standard. The tests and/or calibrations marked with an "*" are not ISO/IEC 17025:2017 accredited test results. This facility meets the human health and food safety sanitation requirements of the Kentucky Cabinet for Health and Family Services as documented by KYCHFS.





Certificate of Analysis

Compliance Test

Client Information:
THRIVE FLOWER
60 N 23RD ST.
APT. 1301
PHILADELPHIA, PA
19103

Manufacturing Facility:
THRIVE FLOWER
60 N 23RD ST.
APT. 1301
PHILADELPHIA, PA 19103

Batch Data:
Batch # 2
Batch Date: 2025-10-27
Extracted From: Hemp D9 THC

Order Details:
Test Reg State: National

Food Permits:

Order #
THR251027-010001
Order Date: 2025-10-27
Sample # AAHE350

Sampling Date: 2025-10-30
Lab Batch Date: 2025-10-30
Completion Date: 2025-11-14

Volume: 446.1 ml

Net Weight per Serving:
446.1 ml
Servings Per Package:
1

National Panel Pesticides
Specimen Weight: 591.300 mg

Passed
SOP13.059 (LCMS)

Dilution Factor: 2.540

Analyte	LOD (ppb)	LOQ (ppb)	Action Level (ppb)	Result (ppb)	Analyte	LOD (ppb)	LOQ (ppb)	Action Level (ppb)	Result (ppb)	Analyte	LOD (ppb)	LOQ (ppb)	Action Level (ppb)	Result (ppb)
Abamectin ¹	0.435	9	300	<LOQ	Hexythiazox ¹	0.045	9.6	2000	<LOQ	Cyantraniliprole ²	0.006004	9.6	10	<LOQ
Acephate ¹	0.467	9.6	3000	<LOQ	Imazalil ¹	0.639	9.6	100	<LOQ	Cyprodinil ²	0.001141	9.6	10	<LOQ
Acequinocyl ¹	0.801	9.6	2000	<LOQ	Imidacloprid ¹	0.159	9.6	3000	<LOQ	Dinotefuran ²	0.236975	9.6	50	<LOQ
Acetamiprid ¹	0.080	9.6	3000	<LOQ	Kresoxim Methyl ¹	0.268	9.6	1000	<LOQ	Endosulfan-alpha ²	12.22	30	2500	<LOQ
Aldicarb ¹	0.124	9.6	100	<LOQ	Malathion ¹	0.410	9.6	2000	<LOQ	Endosulfan-beta ²	22.76	30	2500	<LOQ
Azoxystrobin ¹	0.683	9.6	3000	<LOQ	Metalaxyl ¹	0.749	9.6	3000	<LOQ	Etridiazole ²	4.02	9.6	150	<LOQ
Bifenazate ¹	0.121	9.6	3000	<LOQ	Methiocarb ¹	0.099	9.6	100	<LOQ	Fensulfothion ²	0.000794	9.6	10	<LOQ
Bifenthrin ¹	0.082	9.6	500	<LOQ	Methomyl ¹	0.121	9.6	100	<LOQ	Fenthion ²	4.911315	9.6	10	<LOQ
Boscalid ¹	0.153	9.6	3000	<LOQ	methyl-Parathion ¹	3.065	9.6	100	<LOQ	Fluopyram ²	1.12E-9	9.6	10	<LOQ
Captan ¹	8.966	48	3000	<LOQ	Mevinphos ¹	1.370	9.6	100	<LOQ	Iprodione ²	0.105543	76.8	500	<LOQ
Carbaryl ¹	0.118	9.6	500	<LOQ	Myclobutanil ¹	0.571	9.6	3000	<LOQ	Kinoprene ²	3.4	441.6	1250	<LOQ
Carbofuran ¹	0.178	9.6	100	<LOQ	Naled ¹	0.083	9.6	500	<LOQ	Novaluron ²	0.000205	9.6	25	<LOQ
Chlorantraniliprole ¹	0.052	9.6	3000	<LOQ	Oxamyl ¹	0.123	9.6	500	<LOQ	Pirimicarb ²	0.0000566	9.6	10	<LOQ
Chlordane ¹	3.121	9.6	100	<LOQ	Paclobutrazol ¹	0.123	9.6	100	<LOQ	Pyraclostrobin ²	5.31E-7	9.6	10	<LOQ
Chlorfenapyr ¹	0.139	9.6	100	<LOQ	Permethrin ¹	0.718	9.6	1000	<LOQ	Resmethrin ²	0.068013	9.6	50	<LOQ
Chlormequat Chloride ¹	0.783	9.6	3000	<LOQ	Phosmet ¹	0.301	9.6	200	<LOQ	Tebufenozide ²	0.018121	9.6	10	<LOQ
Chlorpyrifos ¹	0.271	9.6	100	<LOQ	Piperonylbutoxide ¹	0.217	9.6	3000	<LOQ	Teflubenzuron ²	0.01662	9.6	25	<LOQ
Clofentezine ¹	0.119	9.6	500	<LOQ	Prallethrin ¹	1.365	9.6	400	<LOQ	Tetrachlorvinphos ²	0.839125	9.6	10	<LOQ
Coumaphos ¹	0.129	9.6	100	<LOQ	Propiconazole ¹	0.259	9.6	1000	<LOQ	Atrazine ³	0.379918	9.6	9.6	<LOQ
Cyfluthrin ¹	7.730	48	1000	<LOQ	Propoxur ¹	0.147	9.6	100	<LOQ	Buprofezin ³	1.66E-9	9.6	9.6	<LOQ
Cypermethrin ¹	0.887	9.6	1000	<LOQ	Pyrethrins ¹	0.256	1.4	1000	<LOQ	Deltamethrin ³	0.492837	9.6	9.6	<LOQ
Daminozide ¹	1.797	9.6	100	<LOQ	Pyridaben ¹	0.059	9.6	3000	<LOQ	Diuron ³	0.006862	9.6	9.6	<LOQ
Diazinon ¹	1.328	9.6	200	<LOQ	Spinetoram ¹	0.346	9.6	3000	<LOQ	Dodemorph ³	6.47E-12	9.6	9.6	<LOQ
Dichlorvos ¹	0.465	9.6	100	<LOQ	Spinosad ¹	0.028	2.39	3000	<LOQ	Endosulfan sulfate ³	0.88376	9.6	2500	<LOQ
Dimethoate ¹	0.366	9.6	100	<LOQ	Spiromesifen ¹	0.291	9.6	3000	<LOQ	Fenvalerate ³	0.597752	9.6	9.6	<LOQ
Dimethomorph ¹	0.272	9.6	3000	<LOQ	Spirotetramat ¹	0.141	9.6	3000	<LOQ	Lambda Cyhalothrin ³	0.116859	9.6	9.6	<LOQ
Ethoprophos ¹	0.192	9.6	100	<LOQ	Spiroxamine ¹	0.119	9.6	100	<LOQ	Methoprene ³	1.148463	9.6	9.6	<LOQ
Etofenprox ¹	0.116	9.6	100	<LOQ	Tebuconazole ¹	0.000	9.6	1000	<LOQ	MGK-264 ³	0.002068	7.4	7.4	<LOQ
Etoxazole ¹	0.570	9.6	1500	<LOQ	Thiacloprid ¹	0.397	9.6	100	<LOQ	Pentachloronitrobenzen (Quintozene)	1.817	9.6	200	<LOQ
Fenhexamid ¹	1.011	9.6	3000	<LOQ	Thiamethoxam ¹	0.104	9.6	1000	<LOQ	Phenothrin ³	0.00000212	9.6	9.6	<LOQ
Fenoxycarb ¹	0.169	9.6	100	<LOQ	Trifloxystrobin ¹	0.088	9.6	3000	<LOQ	Pyriproxyfen ³	0.0000958	9.6	9.6	<LOQ
Fenpyroximate ¹	0.139	9.6	2000	<LOQ	Allethrin ²	0.472	9.6	100	<LOQ	Spirodiclofen ³	0.373769	9.6	9.6	<LOQ
Fipronil ¹	0.605	9.6	100	<LOQ	Azadirachtin ²	0.003	9.6	500	<LOQ	Tetramethrin ³	0.0000992	9.6	9.6	<LOQ
			2000	<LOQ	Benzovindiflupyr ²	0.013	9.6	10	<LOQ	Thiabendazole ³	0.001251	9.6	9.6	<LOQ
			3000	<LOQ	Clothianidin ²	0.000	9.6	25	<LOQ	Thiophanate-methyl ³	0.000223	9.6	9.6	<LOQ

Aixia Sun
Aixia Sun Lab Director/Principal Scientist
D.H.Sc., M.Sc., B.Sc., MT (AAB)

Definitions are found on page 1

This report shall not be reproduced, without written approval, from ACS Laboratory. The results of this report relate only to the material or product analyzed. Test results are confidential unless explicitly waived otherwise. ACS Laboratory is accredited to the ISO/IEC 17025:2017 Standard. The tests and/or calibrations marked with an "*" are not ISO/IEC 17025:2017 accredited test results. This facility meets the human health and food safety sanitation requirements of the Kentucky Cabinet for Health and Family Services as documented by KYCHFS.

